



### The Next DD Community Forum Will Be March 21

**Tuesday, March 21, 3:00 PM – 4:30 PM**

[Click Here to Register](#)

Join BHDDH for the Spring DD Community Forum on Tuesday, March 21<sup>st</sup> from 3:00-4:30 PM to get the latest news from the BHDDH Division of Developmental Disabilities.

Everyone must register in advance. After you register, you will receive a confirmation email with your unique login details to join the forum.

When you register, you can enter your questions or comments about the RI DD System. Director Kevin Savage and the DD team will answer questions and share other information and updates at this quarterly online event.

The forum will be hosted by Advocates in Action and will be held on Zoom. You will also be able to call in. If you can't join us, the forum will be recorded to watch later.



An ASL interpreter will be present at this event. For other accommodation requests, please email [MichelleWhite@AdvocatesinAction.org](mailto:MichelleWhite@AdvocatesinAction.org). If you have any questions or need assistance registering, call Advocates in Action toll-free: 1-877-532-5543, or email [aina@AdvocatesinAction.org](mailto:aina@AdvocatesinAction.org).

### Conflict-Free Case Management

The RI Executive Office of Health and Human Services (EOHHS) recently posted two documents regarding conflict-free case management (CFCM) to the [RI EOHHS website](#).

1. **RI CFCM Stakeholder Feedback December 2022:** Summarizes stakeholder questions and the State's response. RI EOHHS received feedback from approximately 50 different people and organizations. Many stakeholders brought up overlapping or additional issues or concerns. In most cases, each comment received a separate response; therefore, this document provides the same State response multiple times for similar questions. This document is arranged alphabetically by stakeholder theme to make it easier for you to browse the responses.
2. **RI CFCM Decision Matrix February 2023:** This document provides stakeholders with information about the State's rationale for including certain components in the CFCM Strategic Plan that do not appear to be explicitly mandated in the Home and Community Based Service (HCBS) Final Rule.

**What's Next?** In the coming weeks, RI EOHHS anticipates posting an updated CFCM Strategic Plan and a Request for Information (RFI) to solicit additional information from CFCM vendors. RI EOHHS will continue to post its CFCM materials to its [website](#).

## **Take a look at Rhode Island's NEW Collaboration Hub!**

A Collaboration Hub is an online community for conversation and access to information. As introduced at the January 31<sup>st</sup> State Workforce Summit, Rhode Island has two collaboration hubs under development, one for the [State Workforce Initiative](#) and one for the [Division of Developmental Disabilities](#).

These two online communities are not just websites. They are places for people to go to:

- Get information
- Learn and discuss topics of interest
- Share an idea
- Collect feedback
- Access helpful resources

Across the month of February and March, we are collecting feedback on these two online communities. We would like to know what you like and don't like, what you think is missing, and how you hope to engage in these communities. Take a moment to visit these two online communities and share your thoughts by clicking the links below.

- [Rhode Island Division of Developmental Disabilities Let us know what you think! - Announcements](#)
- [Rhode Island State Workforce Initiative Link to feedback survey - Public Feedback Requested](#)

Interested in a tour of each hub?

- Virtual Hub 30-Minute Tour Dates
  - Thursday, March 9<sup>th</sup> at 3:00pm – [Click Here to Join](#)
  - Tuesday, March 14<sup>th</sup> at 5:30pm – [Click Here to Join](#)
  - Wednesday, March 15<sup>th</sup> at 3:00pm– [Click Here to Join](#)
- Access the [Hub User's Guide](#) to navigate the hub and get involved!
- Visit [Upcoming Events - Stay Engaged - Rhode Island State Workforce Initiative](#) for other upcoming event dates and to access past event materials.

If there is interest, we envision having hub offerings for the Self-Direct community; for providers; and for other groups that would like a central place to share information and discuss DD services.

## **Free Income Tax Preparation Services**

Volunteer Income Tax Preparation Services (VITA) offers free tax preparation services across RI for those that meet income requirements.

For more information, visit <https://www.unitedwayri.org/get-help/tax-prep/> or call **2-1-1**.

**State Workforce Initiative**  
**Service Provider Survey on Training**  
**Complete by Friday, March 10**

The Training and Professional Development statewide initiative workgroup (SWI), in partnership with Standards and Credentialing workgroup, has developed a DD service provider training survey. The goal of this survey is to inventory the existing training available to direct service professionals (DSPs) within agencies and used by those who self-direct. This survey asks about both the BHDDH required training and the recently approved [DSP core competencies](#).

Providers and self-directed individuals/families are asked to take **30 minutes to complete the survey** found at <https://stats.altarum.org/limesurvey/index.php/144868?lang=en>. **Please complete the survey by Friday, March 10.**

**What is this survey for?** The survey will inform the SWI Training and Professional Development Workgroup and the Standards and Credentialing Workgroup on the training available to address BHDDH required competencies and the recently endorsed and voluntary RI DSP core competencies.

**How will information collected be used?** Results of this survey will inform the SWI Training and Professional Development Workgroup and the Standards and Credentialing Workgroup on the training available to address BHDDH required competencies and the recently endorsed and voluntary RI DSP core competencies.

The Training and Professional Development workgroup and the Standards and Credentialing workgroup will use the information shared to:

- Identify areas of overlap and celebrate work completed to date
- Identify training gaps or areas of possible refinement or expansion
- Focus collective efforts to further training and professional development
- Inform the work of the Standards and Credentialing

**Is there a broader plan for SWI developed training?** Not yet. The Training and Professional Development workgroup will use the information gathered through the survey to identify actionable steps which may include developing training modules (for voluntary use) to address gap areas or developing a toolkit or resource guide on where to access training within Rhode Island or nationally. The workgroup may also make recommendations to BHDDH on training and professional development needs across DSP employers, agency and self-direction.

If you have any questions, please reach out to Krissy Azeem, part of the Sage Squirrel team, at [krissy.azeem@altarum.org](mailto:krissy.azeem@altarum.org).

## **Assistive Technology Awareness Day is March 1**

Tomorrow, we celebrate National Assistive Technology (AT) Awareness Day and the vital role AT plays in the lives of people with disabilities. AT is any item, device, or piece of equipment used to maintain or improve the independence and function of people with disabilities and older adults.

AT solutions are as diverse as the goals of the millions of people who benefit from them. A few examples of AT that capture this diversity include speech-generating devices, video magnifiers, timers, wheelchairs, automatic lights, ramps and lifts, voice recognition software, shoe horns, and automatic can openers.

In December, the Assistive Technology Act was reauthorized by Congress for the first time since 2004. This reauthorization updates and modernizes the law and will help expand the capacity of AT Act programs to innovate, collaborate, and serve people with disabilities and older adults.

The National Assistive Technology Act Technical Assistance and Training (AT3) Center has also developed brief hand-outs that you can share describing how AT, and AT Act programs, support [housing](#), [education](#), [employment](#), [transportation](#), and [community living](#). The Association of Assistive Technology Act Programs (ATAP) also houses various videos and materials about the importance of assistive technology on its [National AT Awareness Day page](#).

## **Center on I/DD and Mental Health Conditions Seeks Steering Committee Members**

Through a cooperative agreement with the National Association of State Directors of Developmental Disabilities Services (NASDDDS), ACL has launched a new center to improve support for people with intellectual and/or developmental disabilities (I/DD) who have mental health conditions.

This center will focus on capacity building by supporting state agencies with policy development, service design, and service coordination resources. Guided by people with lived experience, the center also will provide information, training, and peer-to-peer learning for people with I/DD who have mental health conditions, their families, and the professionals who work with them.

The center is currently recruiting for its steering committee, which will make important recommendations on how the center should move forward. The steering committee of 12 people will meet 4 times per year. Steering committee members and, if needed, their support staff will be paid to participate in this project.

A [recruitment explainer video](#) by NASDDDS partner Green Mountain Self-Advocates is posted on the NASDDDS YouTube channel. The three-minute video includes open captions and American Sign Language interpretation.

If you are interested in joining the committee, email [snonnemacher@nasddds.org](mailto:snonnemacher@nasddds.org), call 570-460-3964, or [fill out the interest form](#) by **March 17, 2023**.

## Upcoming Trainings

Thanks to RI's Consolidated Homeless Funds, the Substance Abuse and Mental Health Services Administration (SAMHSA), and BHDDH, the below trainings are being offered free of charge.

While the trainings are aimed at Behavioral Health and Homelessness Prevention, topics may be of interest to DD providers, self-directed staff, and families.

### **Registration is required.**

Click on the links below for course descriptions and to register.

### **In-Person Trainings for March**

The in-person trainings will be held at **The Crowne Plaza in Warwick**, centrally located, easy off and on I-95 with plenty of parking.

#### **Understanding Complex Diagnosis**

Friday, March 3rd from 9:30am-12:30pm

<https://ComplexDiagnosisMarch2023.eventbrite.com>

#### **Vicarious Trauma**

Friday, March 10th from 9:30am-12:30pm

<https://VicariousTraumaOverflowMarch2023.eventbrite.com>

### **Virtual Trainings for March**

#### **Overview of Housing First**

Monday, March 6th from 9:00am-12:00pm

<https://OverviewHFMarch2023.eventbrite.com>

#### **Module 3: Services in the Housing First Model**

Monday, March 20th from 9:00am-12:00pm

<https://HFServicesMarch2023.eventbrite.com>

#### **Housing First Module 2: The Housing Process**

Monday, March 13th from 9:00am-12:00pm

<https://HFModule2March2023.eventbrite.com>

#### **Module 4: The Housing First Home Visit**

Monday, March 27th from 9:00am-12:00pm

<https://HFHomeVisitMarch2023.eventbrite.com>

#### **Doing Our Work Ethically**

Friday, March 17th from 1:00pm-4:00pm

<https://WorkEthicallyMarch2023.eventbrite.com>

#### **Module 5: Evaluating Your Housing First Program**

Monday, April 3rd from 9:00am-12:00pm

<https://HFEvaluationApril2023.eventbrite.com>



Any training questions can be directed to

[housingfirsttraininggroup@gmail.com](mailto:housingfirsttraininggroup@gmail.com)

For more information, visit

<https://www.cabhiriverwood.org/bhhptrainings>

## National Slam the Scam Day

Consumers lost hundreds of millions of dollars to government imposter scams last year alone. Chances are someone you know has received an ominous call or message from someone pretending to be from the government, alleging that your information has been compromised or demanding immediate payment. Ignore it.

This is just one of the tips that the Social Security Administration Office of the Inspector General (SSA OIG) is sharing to warn consumers about these scams through a National Slam the Scam Day initiative taking place March 9, 2023.

Slam the Scam Day is an initiative to raise public awareness of the pervasive scams that continue to plague the nation and is part of the Federal Trade Commission's [National Consumer Protection Week](#), (NCPW) happening March 6-12, 2022. The initiative, which began in 2020 to combat Social Security-related scams, is now expanding to include other government imposter scams. In a government imposter scam, someone claims to be an SSA, or another government employee, and may ask for personal information, demand payment, or make threats. These scams primarily use the telephone, but scammers may also use email, text messages, social media, or U.S. mail.

SSA OIG urges everyone to be cautious of any contact supposedly from a government agency telling you about a problem you don't recognize and provides the following tips. Real government officials will NEVER:

- threaten arrest or legal action against you unless you immediately send money;
- promise to increase your benefits or resolve a problem if you pay a fee or move your money into a protected account;
- require payment with gift cards, prepaid debit cards, wire transfer, Internet currency, or by mailing cash; or
- try to gain your trust by providing fake "documentation," false "evidence," or the name of a real government official.

The public is encouraged to report Social Security-related scams and fraud online at <https://oig.ssa.gov>. Other government imposter scams may be reported to the Federal Trade Commission at <https://www.ftc.gov/scams>.

SSA OIG provides resources on its website and posts tips and warnings on social media platforms like Facebook and Twitter.

Social Security will never threaten, scare, or pressure you to take an immediate action. Recognize the signs of a Social Security-related scam and report it. Slam the Scam!

## **Spring 2023 Webinar Series on Brain Health and Trauma-Informed Care for People with Intellectual and Developmental Disabilities**

This 4-part webinar series on trauma and brain health features the innovative efforts led by Leigh Ann Davis and Mark Starford through The Arc of the United States' [National Center on Criminal Justice and Disability](#) (NCCJD). Join us to learn about brain health and trauma-informed care in a conversation with national peer advocate survivors, allies, and healthcare providers. We will share brain health and trauma resources for people with IDD to increase awareness of systems change efforts to eliminate disability bias through culturally relevant healthcare.

To view and register for multiple webinars, go [HERE](#).

### **Brain Health and Trauma among People with Intellectual and Developmental Disability: Systemic Bias and Ableism in Healthcare**

Wednesday, March 1, 2023 at 2:00pm-3:00pm, [Register Here](#)

### **Trauma and Ableism as Social Determinant of Health for People with Intellectual and Developmental Disability**

Wednesday, March 8, 2023 at 2:00pm-3:00pm, [Register Here](#)

### **People with Intellectual and Developmental Disability Experiencing Abuse: Tips, Tools and Strategies for Providers**

Wednesday, April 26, 2023 at 2:00pm-3:00pm, [Register Here](#)

### **Beyond Silos: Trauma Informed Care for People with Intellectual and Developmental Disability**

Wednesday, May 10, 2023 at 2:00pm-3:00pm, [Register Here](#)

#### PLEASE NOTE

1. Webinars are free.
2. CEUs are not offered for the webinars.
3. Webinars and materials will be recorded and archived on [YouTube Channel](#).
4. For disability accommodations email Jasmina Sisirak ([jsisirak@uic.edu](mailto:jsisirak@uic.edu)).
5. Webinars will be held on Webex platform. You can test your connection with Webex before joining the meeting [HERE](#).

*Healthy Brain Webinar Series is presented by the [HealthMatters Program](#), Department of Disability and Human Development, College of Applied Health Sciences, University of Illinois Chicago in partnership with the National Task Group on Intellectual Disabilities and Dementia Practices (NTG) and The Arc of the United States. Funding is provided through the Centers for Disease Control and Prevention (CDC), National Center for Chronic Disease Prevention and Health Promotion, The Healthy Brain Initiative Award #1 NU58DP006782-01-00. Contents of the webinars are solely the responsibility of the authors/presenters and do not represent the official views of the CDC.*

## Virtual Career Fair Connecting Job Seekers with Disabilities with Inclusive Employers

Tuesday, March 7, 2023

1:30 - 3:30 PM

[Click Here to Register To Attend](#)

The Work Without Limits Career Fair for Individuals with Disabilities connects job seekers with disabilities with inclusive employers.

### Job Candidates

- Network with leading disability-inclusive employers from [Work Without Limits Business Network](#) and MORE!
- Learn about available internships and job opportunities!
- Attend an optional prep webinar on March 1, 3:00-4:00 PM
- Access a Tip Guide to make the most of your job search
- Share your resume with employers pre-event



### Important Registration Information

- The email you use to register must be the same one you use to attend the virtual Career Fair.
- After your register you will receive an email confirmation. Scroll down to "IMPORTANT NEXT STEPS". Click on the link to fill out your **job seeker profile** and **upload your resume**.
- If you do not receive a confirmation email within 24 hours of registering check your spam/junk folder.

The virtual Career Fair will be hosted using Zoom.

For more information and to see the participating recruiters, visit our [event page](#).

### Employers interested in recruiting?

Visit our [event page](#) to learn more and register to recruit.

**Sponsored by:**





## **Contacting DD Staff**

See the full Division Contact List attached to this newsletter.

Monday-Friday 8:30-4:00  
for questions or support  
**(401) 462-3421**

Para español, llame  
**(401) 462-3014**

Send general questions to the  
AskDD email address.  
[BHDDH.AskDD@bhddh.ri.gov](mailto:BHDDH.AskDD@bhddh.ri.gov)  
Please do not email critical issues.

## **Sign Up for Our Email List**

If you aren't receiving email updates  
and newsletters from BHDDH, you can  
[sign up here](#) or on our website. Go to

<https://bhddh.ri.gov/developmentaldisabilities/events/newsandupdates/> to sign up or to see  
past quarterly newsletters and issues of DD News.

**> SIGN UP FOR THE BHDDH NEWSLETTER**

## **If you are experiencing a mental health crisis, BH Link is here for you**

BH Link's mission is to ensure all Rhode Islanders experiencing mental health and substance use  
crises receive the appropriate services they need as quickly as possible in an environment that  
supports their recovery. Call 911 if there is risk of immediate danger. Visit the BH Link website  
at [www.bhlink.org](http://www.bhlink.org) or for confidential support and to get connected to care:

**CALL (401) 414-LINK (5465) If under 18 CALL: (855) KID(543)-LINK(5465)**

Visit the 24-HOUR/7-DAY TRIAGE CENTER at 975 Waterman Avenue, East Providence, RI

## **For Information on the Consent Decree**

For information on the Consent Decree and BHDDH, see <https://bhddh.ri.gov/developmental-disabilities/consent-decree>.

## **COVID-19 Information**

### **Rhode Island Department of Health COVID-19 Resources**

Hotline (401) 222-8022 or 211 after hours;  
Email [RIDOH.COVID19Questions@health.ri.gov](mailto:RIDOH.COVID19Questions@health.ri.gov)  
Website <https://health.ri.gov/covid/>  
*Includes a link to ASL videos*

### **RI Parent Information Network (RIPIN)**

Website <https://ripin.org/covid-19-resources/>  
Call Center (401) 270-0101 or email [callcenter@ripin.org](mailto:callcenter@ripin.org)

### **Advocates in Action – for videos and easy to read materials**

Website <https://www.advocatesinaction.org/>  
*Website offers BrowseAloud, which will read the website to you*

## Division of Developmental Disabilities - All Staff Contacts

**Main Phone #:** (401) 462-3421    **TDD:** (401) 462-3226    **Website:** <https://bhddh.ri.gov/>  
**Fax:** (401) 462-2775    **Spanish Line:** (401) 462-3014    **BH Link:** 401-414-5465

**To report abuse/neglect:  
(401) 462-2629**

Name	Title	Phone	Email
Kevin Savage	Director	462-0581	<a href="mailto:Kevin.Savage@bhddh.ri.gov">Kevin.Savage@bhddh.ri.gov</a>
Heather Mincey	Assistant Director	462-1218	<a href="mailto:Heather.Mincey@bhddh.ri.gov">Heather.Mincey@bhddh.ri.gov</a>
Christine Botts	Deputy Administrator	462-2766	<a href="mailto:Christine.Botts@bhddh.ri.gov">Christine.Botts@bhddh.ri.gov</a>
Brenda DuHamel	Associate Director, Admin Services	462-3010	<a href="mailto:Brenda.DuHamel@bhddh.ri.gov">Brenda.DuHamel@bhddh.ri.gov</a>
Cindy Fusco	Chief Implementation Aide	462-3016	<a href="mailto:Cynthia.Fusco@bhddh.ri.gov">Cynthia.Fusco@bhddh.ri.gov</a>
Melissa Greenlief	Administrator, Community Services	462-2459	<a href="mailto:Melissa.Greenlief@bhddh.ri.gov">Melissa.Greenlief@bhddh.ri.gov</a>
Susan Hayward	Administrator, Youth in Transition	462-2519	<a href="mailto:Susan.Hayward@bhddh.ri.gov">Susan.Hayward@bhddh.ri.gov</a>
Anne LeClerc	Associate Director, Program Performance	462-0192	<a href="mailto:Anne.LeClerc@bhddh.ri.gov">Anne.LeClerc@bhddh.ri.gov</a>
Tracy Levesque	Clinical Administrator	462-0209	<a href="mailto:Tracy.Levesque@bhddh.ri.gov">Tracy.Levesque@bhddh.ri.gov</a>
Gerard (Jay) MacKay	Associate Administrator, Employment	462-5279	<a href="mailto:Gerard.Mackay@bhddh.ri.gov">Gerard.Mackay@bhddh.ri.gov</a>
Erin Perron	Associate Director, RICLAS	462-2180	<a href="mailto:Erin.Perron@bhddh.ri.gov">Erin.Perron@bhddh.ri.gov</a>
Jacqueline Reilly	Programming Services Officer	462-0126	<a href="mailto:Jacqueline.Reilly@bhddh.ri.gov">Jacqueline.Reilly@bhddh.ri.gov</a>
Vacant	Administrator, Employment	462-3857	

### Case Management Units

#### *East Providence/Pawtucket/Central Falls region*

Marguerite Belisle	Casework Supervisor II	462-0714	<a href="mailto:Marguerite.Belisle@bhddh.ri.gov">Marguerite.Belisle@bhddh.ri.gov</a>
Amie Adams	Social Caseworker II	462-2480	<a href="mailto:Amie.Adams@bhddh.ri.gov">Amie.Adams@bhddh.ri.gov</a>
Carl Desjarlais	Social Caseworker II	462-1555	<a href="mailto:Carl.Desjarlais@bhddh.ri.gov">Carl.Desjarlais@bhddh.ri.gov</a>
Stacey Perry	Social Caseworker II	462-2418	<a href="mailto:Stacey.Perry@bhddh.ri.gov">Stacey.Perry@bhddh.ri.gov</a>
Suzanne Porter	Social Caseworker II	462-1972	<a href="mailto:Suzanne.Porter@bhddh.ri.gov">Suzanne.Porter@bhddh.ri.gov</a>
Mary Beth Silveria	Social Caseworker II	462-2438	<a href="mailto:Marybeth.Silveria@bhddh.ri.gov">Marybeth.Silveria@bhddh.ri.gov</a>
Heather Soares	Social Caseworker II	462-6097	<a href="mailto:Heather.Soares@bhddh.ri.gov">Heather.Soares@bhddh.ri.gov</a>

#### *Northern RI/West Bay/Kent Region*

Janice Bijesse	Casework Supervisor II	462-4290	<a href="mailto:Janice.Bijesse@bhddh.ri.gov">Janice.Bijesse@bhddh.ri.gov</a>
Mary Cameron	Social Caseworker II	462-1307	<a href="mailto:Mary.Cameron@bhddh.ri.gov">Mary.Cameron@bhddh.ri.gov</a>
Jackie Camilloni	Social Caseworker II	462-3022	<a href="mailto:Jackie.Camilloni@bhddh.ri.gov">Jackie.Camilloni@bhddh.ri.gov</a>
Megan Gilbert	Social Caseworker II	462-2524	<a href="mailto:Megan.Gilbert@bhddh.ri.gov">Megan.Gilbert@bhddh.ri.gov</a>
Dayna Hansen	Social Caseworker II	462-2505	<a href="mailto:Dayna.Hansen@bhddh.ri.gov">Dayna.Hansen@bhddh.ri.gov</a>
Natalie Sam	Social Caseworker II	462-2529	<a href="mailto:Natalie.Sam@bhddh.ri.gov">Natalie.Sam@bhddh.ri.gov</a>
Erin Simonelli	Social Caseworker II	462-2502	<a href="mailto:Erin.Simonelli@bhddh.ri.gov">Erin.Simonelli@bhddh.ri.gov</a>

#### *South County/West Bay/Kent Region*

Meredith MacDonald	Casework Supervisor II	462-1329	<a href="mailto:Meredith.Macdonald@bhddh.ri.gov">Meredith.Macdonald@bhddh.ri.gov</a>
Marisa Abbruzzi	Social Caseworker II (RICLAS)	462-6099	<a href="mailto:Marisa.Abbruzzo@bhddh.ri.gov">Marisa.Abbruzzo@bhddh.ri.gov</a>
Timothy Cronin	Social Caseworker II	462-1721	<a href="mailto:Timothy.Cronin@bhddh.ri.gov">Timothy.Cronin@bhddh.ri.gov</a>
Jennifer Gouveia	Social Caseworker II	462-0098	<a href="mailto:Jennifer.Gouveia@bhddh.ri.gov">Jennifer.Gouveia@bhddh.ri.gov</a>
Jill Murphy	Social Caseworker II	462-2409	<a href="mailto:Jill.Murphy@bhddh.ri.gov">Jill.Murphy@bhddh.ri.gov</a>
Lena Sousa	Social Caseworker II	462-1834	<a href="mailto:Lena.Sousa@bhddh.ri.gov">Lena.Sousa@bhddh.ri.gov</a>
Joseph Tevyaw	Social Caseworker II	462-2474	<a href="mailto:Joseph.Tevyaw@bhddh.ri.gov">Joseph.Tevyaw@bhddh.ri.gov</a>

#### *Providence/West Bay/Kent Region*

Kelly Petersen	Casework Supervisor II	462-3402	<a href="mailto:Kelly.Petersen@bhddh.ri.gov">Kelly.Petersen@bhddh.ri.gov</a>
Lauree Champagne	Social Caseworker II	462-2728	<a href="mailto:Lauree.Champagne@bhddh.ri.gov">Lauree.Champagne@bhddh.ri.gov</a>
JoAnn DiMuccio	Social Caseworker II	462-2523	<a href="mailto:JoAnn.DiMuccio@bhddh.ri.gov">JoAnn.DiMuccio@bhddh.ri.gov</a>
Souphalak Muriel	Social Caseworker II	462-2512	<a href="mailto:Souphalak.Muriel@bhddh.ri.gov">Souphalak.Muriel@bhddh.ri.gov</a>
Yolande Ramos	Social Caseworker II	462-1059	<a href="mailto:Yolande.Ramos@bhddh.ri.gov">Yolande.Ramos@bhddh.ri.gov</a>
Judy Smith	Social Caseworker II	462-1327	<a href="mailto:Judith.Smith@bhddh.ri.gov">Judith.Smith@bhddh.ri.gov</a>

#### Eligibility Unit

Karen Lowell	Casework Supervisor II	462-2209	<a href="mailto:Karen.Lowell@bhddh.ri.gov">Karen.Lowell@bhddh.ri.gov</a>
Christine Harding	Social Caseworker II	462-3233	<a href="mailto:Christine.Harding@bhddh.ri.gov">Christine.Harding@bhddh.ri.gov</a>
Lori Lombardi, RN	PASRR	462-0089	<a href="mailto:Lori.Lombardiburns@bhddh.ri.gov">Lori.Lombardiburns@bhddh.ri.gov</a>
Kim Wright	Information Aide	462-2584	<a href="mailto:Kimberly.Wright@bhddh.ri.gov">Kimberly.Wright@bhddh.ri.gov</a>

#### SIS Unit

Donna Standish	Casework Supervisor II	462-2628	<a href="mailto:Donna.Standish@bhddh.ri.gov">Donna.Standish@bhddh.ri.gov</a>
Wendy Cormier	Social Caseworker II	462-1302	<a href="mailto:Wendy.Cormier@bhddh.ri.gov">Wendy.Cormier@bhddh.ri.gov</a>
Kristen Miga	Social Caseworker II	462-0449	<a href="mailto:Kristen.Miga@bhddh.ri.gov">Kristen.Miga@bhddh.ri.gov</a>
Jamie Fitzgibbons	Social Caseworker II	462-2510	<a href="mailto:Jamie.Fitzgibbons@bhddh.ri.gov">Jamie.Fitzgibbons@bhddh.ri.gov</a>
Meaghan Jencks	Social Caseworker II	462-2113	<a href="mailto:Meaghan.Jencks@bhddh.ri.gov">Meaghan.Jencks@bhddh.ri.gov</a>

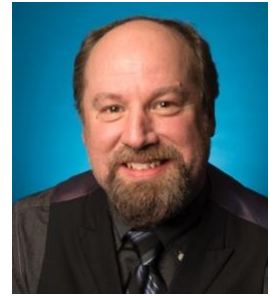
#### Transition Unit

Susan Hayward	Administrator, YIT	462-2519	<a href="mailto:Susan.Hayward@bhddh.ri.gov">Susan.Hayward@bhddh.ri.gov</a>
Carolee Leach	Professional Services Coordinator	462-1723	<a href="mailto:Carolee.Leach@bhddh.ri.gov">Carolee.Leach@bhddh.ri.gov</a>

#### Support Staff

Stephanie Andreozzi	Implementation Aide	462-1859	<a href="mailto:Stephanie.Andreozzi@bhddh.ri.gov">Stephanie.Andreozzi@bhddh.ri.gov</a>
Laurie Rossi	Implementation Aide	462-2563	<a href="mailto:Laurie.Rossi@bhddh.ri.gov">Laurie.Rossi@bhddh.ri.gov</a>
Lori Vandall	Clerk Typist	462-6086	<a href="mailto:Lori.Vandall@bhddh.ri.gov">Lori.Vandall@bhddh.ri.gov</a>

**FREE 3 Day Employer Engagement Training**  
**“From Traditional Job Development to  
Engaging Employers Economically”**



**Dates: Tuesday, March 14, Wednesday, March 15, & Thursday March 16, 2023**  
**Time: 9:00 am -3:30 pm Location: TBD**

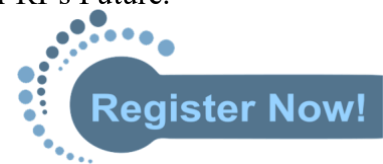
Join us for an interactive and creative 3-day training with Doug Crandell! We will facilitate a community of practice to further develop our skills sets related to employer and business engagement. Doug will share information on model employer engagement initiatives and concrete strategies for developing continuous quality improvement in customized employment services. This training includes knowledge transfer, group work, and purposeful planning for developing more effective employer connections in RI.

Major topics Doug will cover are listed below:

- Economics 101
- Workforce/Economic Development versus Job Development
- Developing Public-Private Partnerships and Building Ongoing Relationships with Employers
- Informational Interviewing with Employers to Identify Employer Workforce Needs
- Visioning for 2023 (Putting it all together and tracking metrics)

Participants will be involved on an interactive team of 3-5 persons to work together to research a local business, schedule and participate in an informational interview with an employer, create a presentation on the business and workforce needs, and share their experience/presentation with everyone for feedback on potential follow-up opportunities for job development, internships, business-within-a-business, etc. for people with disabilities as well as continued relationships with the employer. We will also talk about next steps for enhancing this work with employers in collaboration with Skills for RI's Future.

**Participation is Limited: Contact Sue Babin, RIDDC, at 523-2300 or email at [suebabin@riddc.org](mailto:suebabin@riddc.org) for more information or to reserve space. Participation is limited!**



**Doug Crandell, M.F.A.** has worked in employment services for 30 years, and has been the Project Director for grants funded through the U.S. DOL, Bureau of Justice Assistance, and the SSA. He directed Georgia's Medicaid Infrastructure Grant funded by CMS, is on the faculty of University of Georgia's Institute on Human Development and Disability and is a Senior Consultant with Griffin-Hammis. He provides ongoing training to GA's employment providers. He is a Subject Matter Expert (SME) with States to restructure their employment supports to include evidence-based supported employment, customized employment, and self-employment. He is Project Director, GA's Training and Technical Assistance Center for Employment funded by the Georgia DD Council: *Advancing Employment*. Doug has also published eight books and is a regular contributor to the SUN Magazine, where he publishes essays on labor, health and disability. His most recent book published by Cornell University Press is: "[Twenty-Two Cents an Hour: Disability Rights and the Fight to End Subminimum Wages.](http://www.abolish14c.com)" [www.abolish14c.com](http://www.abolish14c.com)

Training is sponsored by the RI Cross Disability Coalition and the RI Developmental Disabilities Council (RIDDC). This initiative is funded by DD as one of the DD Transformation Grants.

# LUNCH AND LEARN: Working While Disabled—Work Incentives Sessions

## Working with Benefits - Yes, You Can!

February 23, 2023, 12-1 pm

## SSDI Overview:

March 15, 2023, 12-1 pm

## SSI Overview:

April 26, 2023, 12-1 pm

## Work Pays! An Introduction to YOUTH

April 20, 2023, 6:00-7:00 pm



*ALL SESSIONS will be offered on Zoom with subtitles in English.*

**REGISTER ONLINE at <https://bit.ly/2KkUCVQ>**

The Sherlock Center provides Work Incentive Information and Benefits Counseling services to SSI and SSDI beneficiaries and those that support them (family, guardian, rep payee, professionals). These sessions will be of value to anyone looking for a basic introduction to disability-related work incentives and/or has related questions. The Work and Benefits Introduction is for those starting to think about working and have general questions. The SSI or SSDI sessions provide details about the specific work incentives and other related information. All sessions provide an opportunity for you to ask questions about the following topics:

- Ticket to Work
- SSI or SSDI Work Incentives
- Resources about Work Incentive Information
- Access to Benefits Counseling
- Working and Impact on Health Insurance Medicaid/Medicare
- Other questions related to benefits and working

Upon registration please share your questions.

NOTE: These sessions will not address how to apply for SSI or SSDI benefits.

**TIP:** Unsure if you receive SSI or SSDI? You can confirm which benefit you have at <https://www.ssa.gov/myaccount/>

**Presented by Certified Work Incentives Counselors.**

**REGISTRATION IS LIMITED!** Advance registration is required. After registering, you will receive a confirmation email containing information about joining the session. You can access the session by computer, mobile device or listen using a cell or landline phone.

**Accommodation requests or registration questions:** Contact Elaine Sollecito at [esollecito@ric.edu](mailto:esollecito@ric.edu), 401-456-2764.

**Session questions:** Contact Vicki Ferrara at [vferrara@ric.edu](mailto:vferrara@ric.edu), 401-456-8092 or Joshua Hughes at [jhughes@ric.edu](mailto:jhughes@ric.edu), 401-456-4734.



## SELF-EMPLOYMENT ONLINE Classes for People with Disabilities, Families and Community Agencies

**NEXT CLASS STARTING March 7, 2023**



Do you know a person with a disability who has a hobby or idea for a possible business or who needs more support for an existing small business? If so, our **FREE ONLINE ZOOM Business Classes** can help the person to learn all about self-employment and available resources for their business idea and financial future!

Traditional employment in jobs may not be the best option for some people with disabilities. Small business ownership is another option and great choice to do work that has *real meaning* for the person. It is something people can control themselves, and to sell a product or a service they really love. There are over 100 people with disabilities in RI who have started their own businesses in the last few years. Here's what Michael Coyne, business owner of "Red, White and Brew Café" in Warwick, RI has to say:

### WHY CHOOSE SELF-EMPLOYMENT?

1. I love being my own "BOSS", meeting new people and spending my time working on something I really enjoy every day!
2. I decide my own flexible work schedule and hours.
3. The Business Classes helped me to learn skills for problem solving, communication, marketing, and self-advocacy. I met other great people with disabilities who also own their own businesses. I also received a grant to buy the materials/supplies I needed for my business.
4. I have assistance through my personal support network, my Business Team and RIDDC who are there to help me with my business.
5. I am no longer "volunteering" my time at a job, but instead I have my own business making money and I now have an income!



The RI Developmental Disabilities Council (RIDDC), in partnership with CWE and others a FREE Business Development Series of 8 Classes, ONLINE through ZOOM Meetings. The first Class is **Tuesday, March 7, 2023 from 12:45 pm-2:30 pm** and others scheduled every week. We want to assist people to learn the right business skills and access resources to become profitable RI small business owners!

The Classes provide business advice, resources and ongoing peer and staff support to participants, families and staff and contact with experienced Business Advisors. They know how to work with people to develop good business plans, marketing ideas, and set goals the person can achieve in the industry he/she launches.

The Series includes the following Classes: 1. Is Entrepreneurship (Self-Employment) Right for You?, 2. Steps to Start a Small Business, 3. Identifying Your Target Market, 4. Developing an Effective "Elevator Speech" about Your Service/Product(s), 5. How to Write a Good Business Plan, 6. Finances, Bookkeeping, and Community Resources, 7. Marketing Your Business Idea, and 8. Using Social Media to Promote your Business.

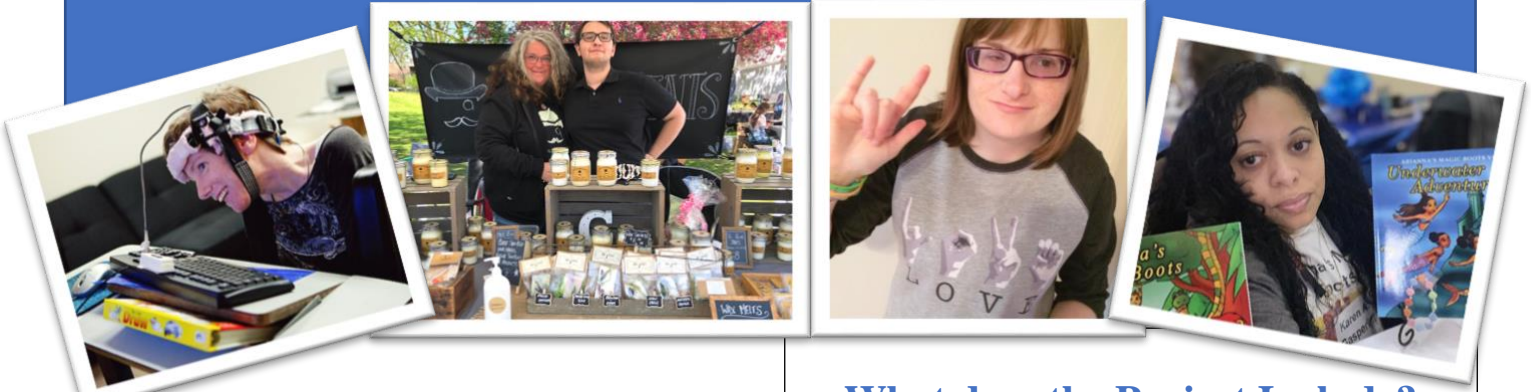
**To Register for this Class or For More Information Call Claudia Lowe at 738-3960 or Sue Babin at 523-2300. (Participation Is Limited!)**



*This project is funded by DLT's and the Governor's Workforce Board's "Real Jobs RI" initiative.*

# RI's Self-Employment Project

## Learn How You Can Start Your Own Business!



### Why Choose Self-Employment?

Self-employment offers people with disabilities and others flexibility and control that traditional jobs do not, such as meaningful employment in an area the person has a *real passion* for, setting their own flexible work hours, being their own “Boss”, determining their actual place of employment, working at their own pace, and increasing each person’s self-esteem.

Traditional 9-5 wage jobs and various types of workplace environments may not be the best option for some individuals with disabilities. “*Self-employment and the spirit of individual enterprise*” can match a person’s dreams, hobbies and skills to start their own business earning competitive wages, facilitate diversity and inclusion, and build each person’s financial future!

### What does the Project Include?

The Project provides ongoing support for aspiring entrepreneurs to develop their business idea, launch or grow their small businesses, and improve their financial futures. It includes:

- 8 Business Development Classes through ZOOM Meetings in interactive formats people can understand
- Project Staff and Peer Mentor Support
- 1-1 Business Support from Business Advisors for marketing; Business Planning; Business Card, Facebook or Website design; Accounting/Finances, etc.
- Mini-Grants for materials/supplies/equipment
- Weekly Entrepreneur’s Forum with practical information and networking ideas
- Opportunity to participate in various local community Vendor Marketplace Events
- Completion of a Business Planning Portfolio



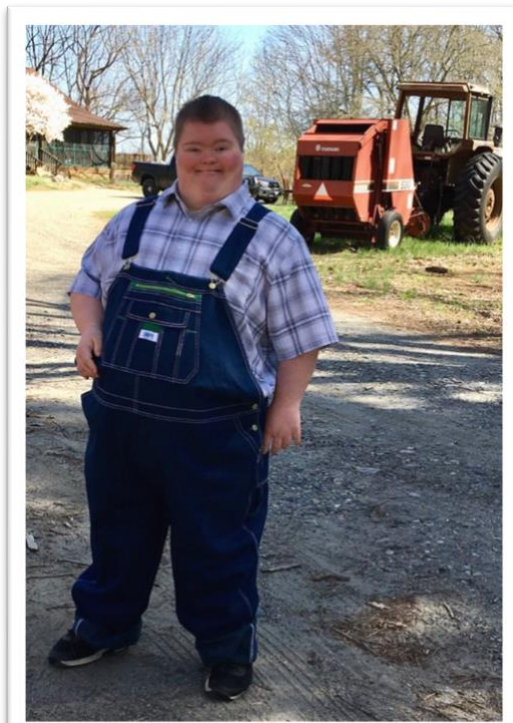
**In RI there are many individuals with disabilities who have figured out creative ways to leverage their talents, skills, resources and connections into their ideal job... not through finding jobs, but by creating their own employment and small business!**



## What Do You Need to Get Started?

- A hobby, talent or skill that you want to pursue as a possible small business
- An interest in learning more about the steps to start a business and necessary ongoing business support
- Ability to connect on a laptop, computer or I-Pad for 8 weekly ZOOM Business Classes
- Family, friends or support staff who can be a part of your Business Team to assist you with the business classes and other business development resources you may need to explore

**ANYONE can be a small business owner with the right resources and support!**



## How Did this Project Start?

The RI Department of Labor and Training (DLT) and “*Real Jobs RI*” has provided funding to the RI Developmental Disabilities Council (RIDDC) since 2018 to administer this Project and organize the ongoing business development support people with disabilities need to successfully start up or grow a small business. The Council provides additional in-kind resources to support the operational components and other activities to help promote entrepreneurs with disabilities and their businesses.

## Where Can I Get More Information?

The next round of the Business Development Series and 8 Classes through Zoom starts March 2023.

To see more information on this Project and read about some great success stories of people with disabilities and their individual businesses in RI check out the RIDDC’s website at [www.riddc.org](http://www.riddc.org) and click on the Self-Employment tab. You will be inspired by these entrepreneurs who have made their dreams into reality through business ownership!

You can also contact Sue Babin, Project Director at 401-523-2300, Project Staff Claudia Lowe at 401-738-3960 or the RIDDC at 737-1238 for more information.

